

VILLA LOREANNA



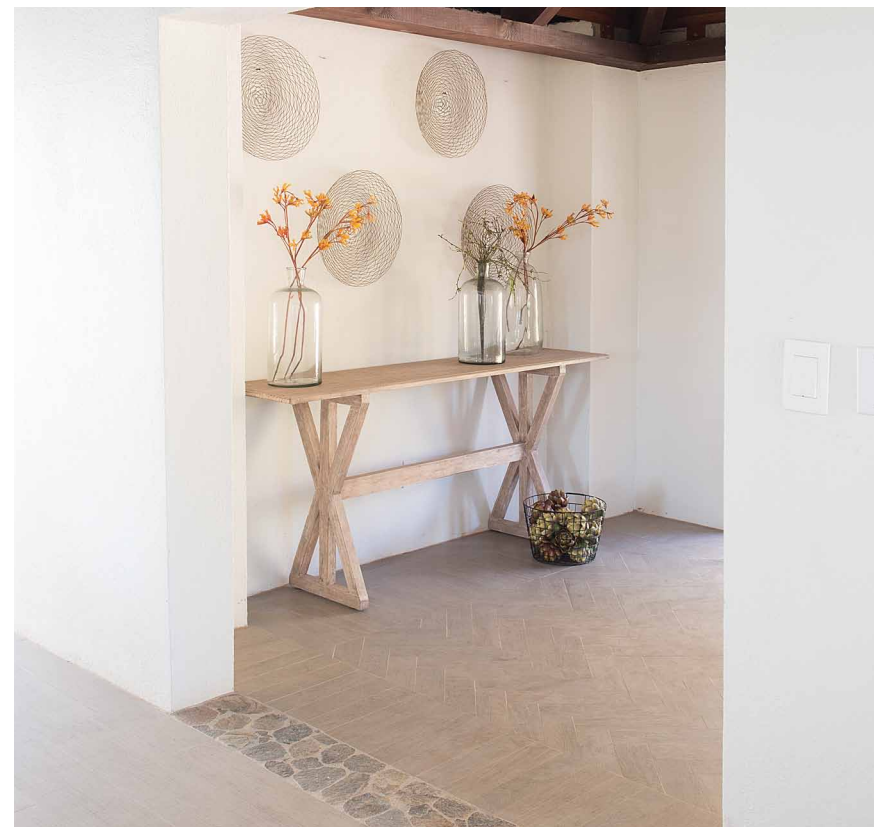


THE RESIDENCE

Extraordinary views of the harbour, St. Anthony's Peak, and Sandy Bank Bay are on full display throughout Villa Loreanna, a home of exceptional elegance. Multiple vantage points are offered across 5,833 square feet of gracious living space. Created for effortless entertaining, the home's functional floor plan extends into the outdoors with an open-air pool pavilion and outdoor dining.



Villa Loreanna's interiors capitalize on radiant natural lighting. An abundance of windows allow for a wash of Caribbean sunlight across the deep wood finishes, artful stonework, and inspired tiling of the home. Detached sleeping pavilions promise a relaxing and private respite for guests while the master suite indulges residents with a sitting area, spa-style bath, and direct access to an expansive outdoor living space.



THE DESIGN

A showcase for entertaining, relaxing, and reveling in nature's most stunning vistas, Villa Loreanna's custom design boasts a masterful floor plan, marrying indoor and outdoor beauty effortlessly. Claiming prime placement among the verdant hillsides, crystalline waters, and pristine beaches of Christophe Harbour, the home celebrates both the social and the serene moments that island living affords.

5,833 SQUARE FEET
4 ENSUITE BEDROOMS
1 POWDER ROOM
PARTIALLY FURNISHED

DISTINCTIVE ELEMENTS:

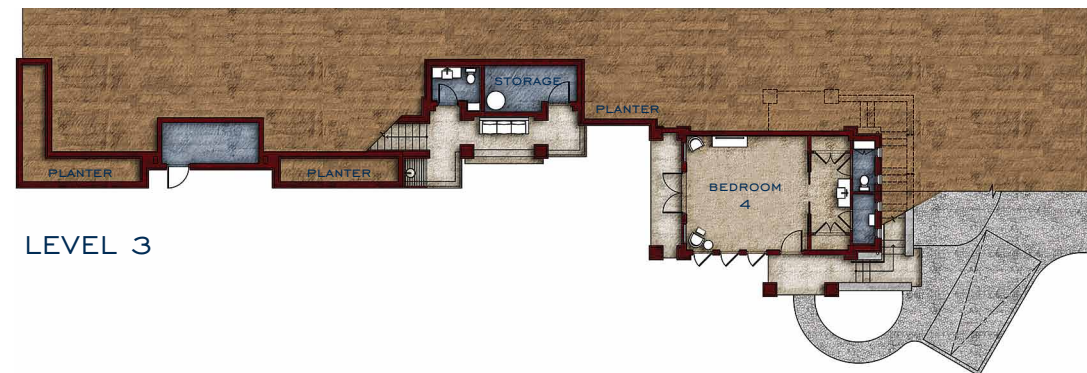
- » Hillside location with harbour, marina, and ocean views.
- » Local Kittitian stone façade with stucco exteriors
- » Red cedar and mahogany millwork throughout
- » Three guest suites with private terraces
- » Outdoor dining area overlooking the pool
- » Poolside pavilion with covered trellis and garden
- » Motor court with 2-car garage
- » Glass mosaic tilework and stone countertops
- » Kitchen and living area opens to the pool
- » Qualifies for Citizenship by Investment program and Christophe Harbour Club membership



LEVEL 1



LEVEL 2

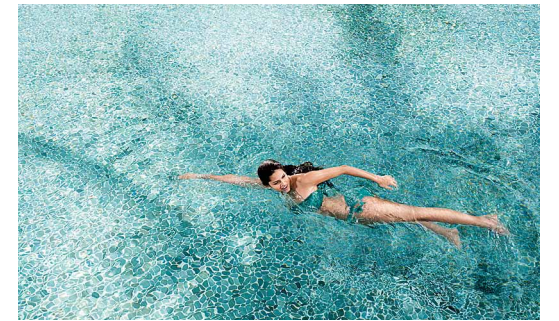


LEVEL 3

SANDY BANK BAY

With picture-perfect placement along a sparkling bay and an expansive stretch of sugar-sand beach, Sandy Bank Bay is the premiere residential offering at Christophe Harbour. The Pavilion beach club, a brief stroll from Villa Loreanna, is the social centerpiece of the community. Home to al fresco dining, oceanfront pool, and beachside cabana bar, The Pavilion celebrates relaxed refinement and exceptional service. Just off the shores of Sandy Bank Bay, reefs ensure prime snorkeling while trailheads for hiking and biking ribbon the landscape. Taking shape just a short drive away are the Tom Fazio golf course atop Priddies Plateau and a superyacht marina and village.

To inquire for more information or to schedule a private showing of the residence at Villa Loreanna, please contact your Christophe Harbour Real Estate Sales Executive at 869.466.8738 or info@christopheharbour.com.





CHRISTOPHE HARBOUR
ST. KITTS

Call, email, or log on and start your journey today.
800.881.7180 or 869.466.8738 | info@ChristopheHarbour.com | ChristopheHarbour.com

Authorized by the Government of St. Kitts and Nevis as an Approved Project for Citizenship by Investment.

Obtain the Property Report required by Federal law and read it before signing anything. No Federal agency has judged the merits or value, if any, of this property. This is not intended to be a solicitation or offer for purchase in states and/or jurisdictions where registrations is required. Prices, plans, products and availability are subject to change without notice. Illustrations are artist's renderings only and may differ from completed product. Improvements, facilities, and programs are in formative stages and subject to change without notice and cannot be guaranteed at this time. Nothing in these materials obligates the developer or any other entity to build any facilities, improvements, features or amenities depicted by artist's renderings or otherwise described herein, and there is no guarantee that any illustrated or described proposed future development will be implemented. Use of recreational facilities and amenities may be subject to separate club membership requirements, payment of fees and/or other restrictions. Ownership may include the opportunity to place your unit in a rental arrangement. An Affiliate of Klawah Partners.