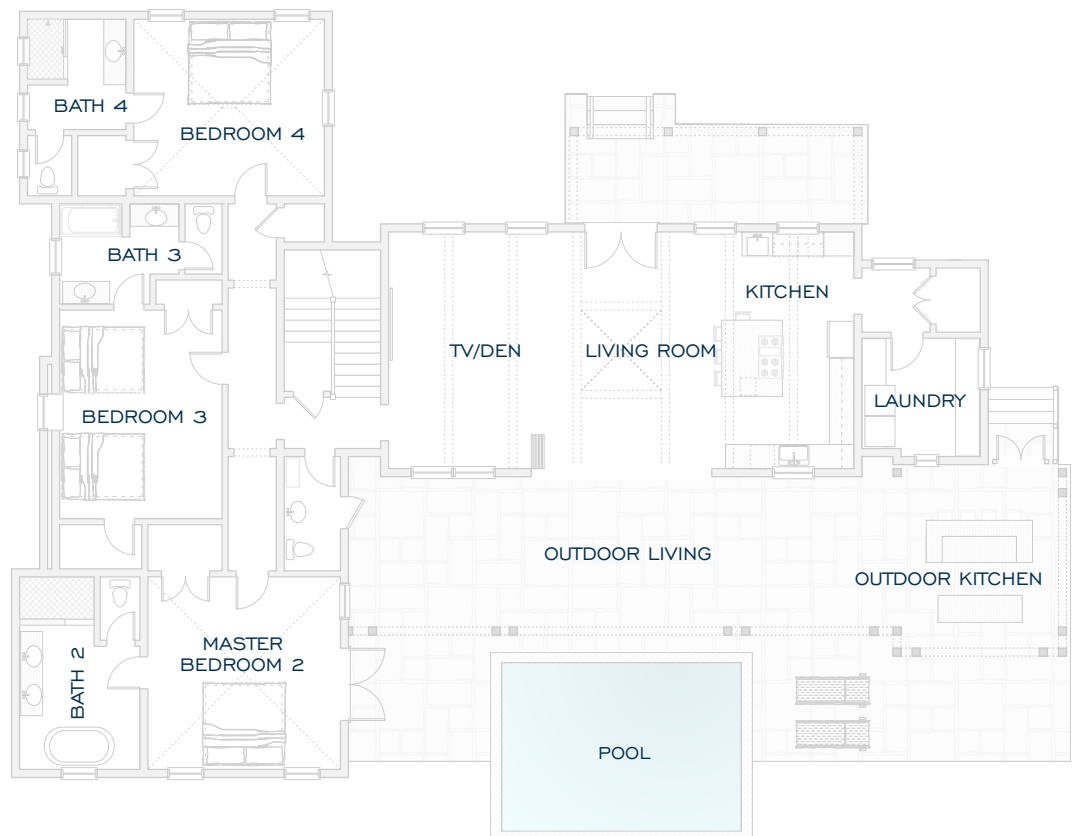




WINDSWEPT  
RESIDENCE CLUB  
VILLA HIBISCUS



## LEVEL 1





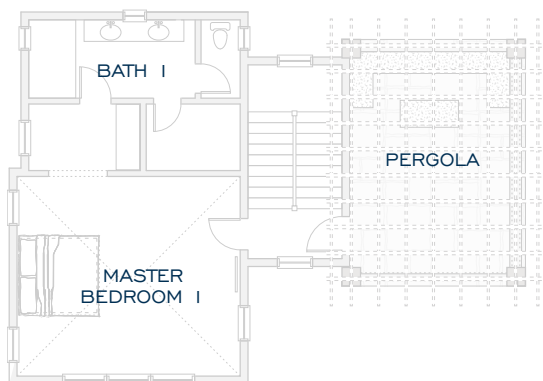
## VILLA HIBISCUS

\$450,000 PER SHARE

### DISTINCTIVE ELEMENTS

- ✦ Fully furnished
- ✦ Two master suites, each with direct access to outdoor living space
- ✦ Spacious guest rooms, sleeps up to 10 people
- ✦ Vaulted wood ceilings, heavy beam construction, and Wallaba roof shakes
- ✦ Natural stone flooring throughout
- ✦ Luxurious European kitchens with custom cabinetry, designer appliances, and quartz or stone countertops
- ✦ Spacious indoor living areas that open to terrace
- ✦ Full outdoor kitchen and bar
- ✦ Intimate, professionally landscaped gardens
- ✦ Outdoor living area with pool and stone decking
- ✦ Environmentally-minded design
- ✦ Energy Star standards
- ✦ Maintenance-free stucco finish
- ✦ Hurricane impact-rated windows, doors, and construction
- ✦ Expansive hillside, harbour, and ocean views
- ✦ Membership in the Christophe Harbour Club
- ✦ Short walk to The Pavilion beach club and future amenities
- ✦ Eligible for Citizenship by Investment

### LEVEL 2



#### VILLA HIBISCUS (H)

2 STORY PLAN

LIVING SPACE: 4,439 SQ. FT. / 412.4 SQ. METERS

2ND FLOOR TERRACE: 314 SQ. FT. / 29.2 SQ. METERS

4 ENSUITE BEDROOMS

1 POWDER ROOM

SLEEPS UP TO 10 PEOPLE

