



OCEAN GROVE VILLAS

CHRISTOPHE HARBOUR



CHRISTOPHE HARBOUR
ST. KITTS

Call, email, or log on and start your journey today.

800.881.7180 or 843.310.0765 | info@ChristopheHarbour.com | ChristopheHarbour.com

Authorized by the Government of St. Kitts and Nevis as an Approved Project for Citizenship by Investment.

Prices, plans, products and availability are subject to change without notice. Illustrations are artist's renderings only and may differ from completed product. Improvements, facilities, and programs are in formative stages and subject to change without notice and cannot be guaranteed at this time. Nothing in these materials obligates the developer or any other entity to build any facilities, improvements, features or amenities depicted by artist's renderings or otherwise described herein, and there is no guarantee that any illustrated or described proposed future development will be implemented. Use of recreational facilities and amenities may be subject to separate club membership requirements, payment of fees and/or other restrictions. Ownership may include the opportunity to place your unit in a rental arrangement.

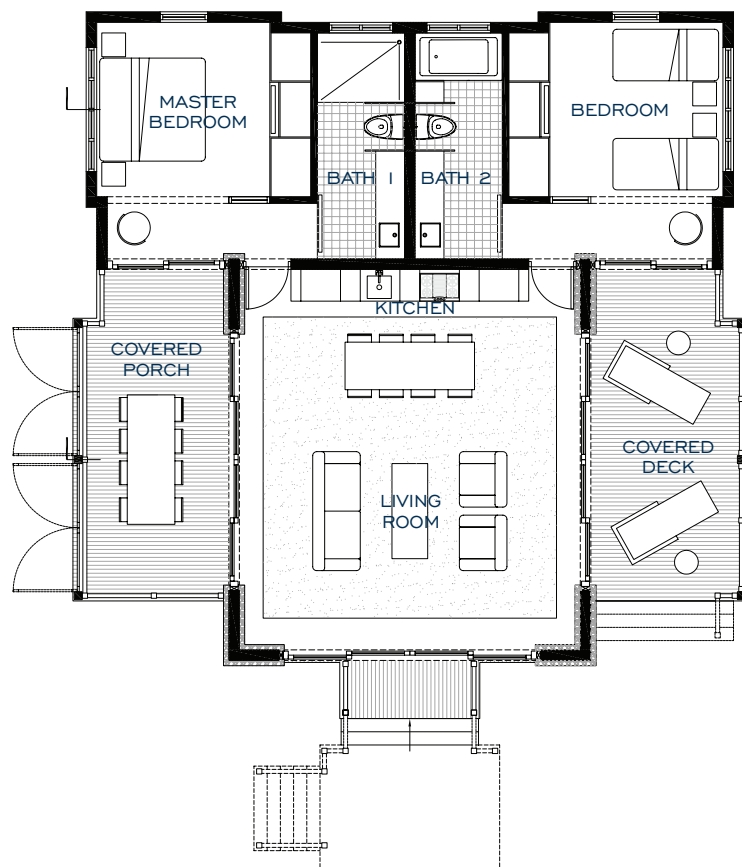


OCEAN GROVE VILLAS



DISTINCTIVE ELEMENTS

- ❖ Fully furnished, 2 ensuite bedrooms
- ❖ Natural stone floors throughout
- ❖ Tropical wood and stone decking
- ❖ SieMatic cabinetry in kitchen and baths
- ❖ Bosch appliance package
- ❖ Kohler and Grohe plumbing fixtures
- ❖ Exposed beams with two finish and trim options
- ❖ Multiple options for interior colors, furnishings, and fixtures
- ❖ Master bathroom walk-in shower
- ❖ Oil-rubbed bronze hardware on mahogany interior doors
- ❖ Covered porch with natural wood dining table
- ❖ Trellis-covered deck with chaise lounges
- ❖ Located within Sandy Bank Bay neighborhood
- ❖ Membership in the Christophe Harbour Club
- ❖ Steps from dining, tennis, Pavilion beach club, and other resort amenities
- ❖ Eligible for Citizenship by Investment Program



OCEAN GROVE

1 STORY PLAN
 LIVING SPACE: 1,632 SQ FT/152 SQ METERS
 CONDITIONED: 1,210 SQ FT/112 SQ METERS
 EXTERIOR: 422 SQ FT/39 SQ METERS
 2 ENSUITE BEDROOMS

