

129 MORNING RISE LANE



THE MIDDAY MAJESTY OF SANDY BANK BAY.



THE RESIDENCE

The stunning views afforded by this exceptional home begin upon arrival at 129 Morning Rise Lane. The harbor, the sea, the beach, and Nevis Peak are on glorious display from the covered trellis, entry garden, and extraordinary sunset pavilion. Across 3,948 square feet of refinement, an outdoor living area, floor-to-ceiling windows, and double French doors partner to beckon the outdoors in.



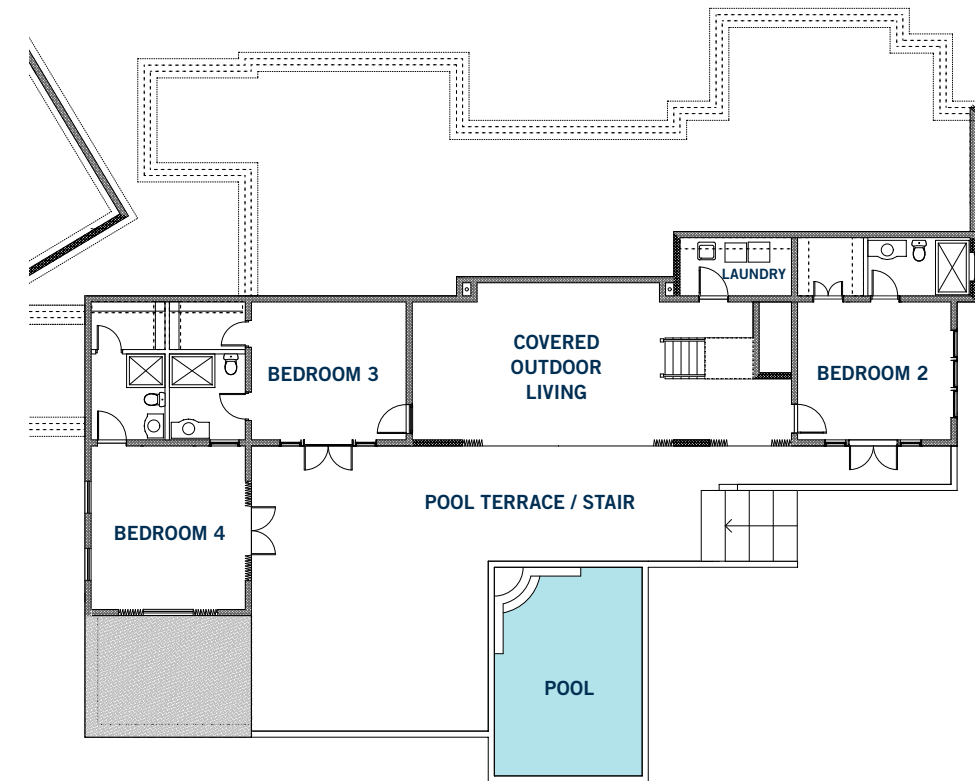
Vaulted ceilings and expansive windows bring a remarkable sense of volume to this fully-furnished island estate. Indoor elegance marries outdoor ease in an open-air living area with a poolside wet bar. Both the home's upper level, comprised of the Master suite and primary living areas, and the lower level, replete with three guest bedrooms, capitalize on radiant natural lighting. Additionally, each bedroom proffers easy access to a the pool, outdoor living area, and the beach.



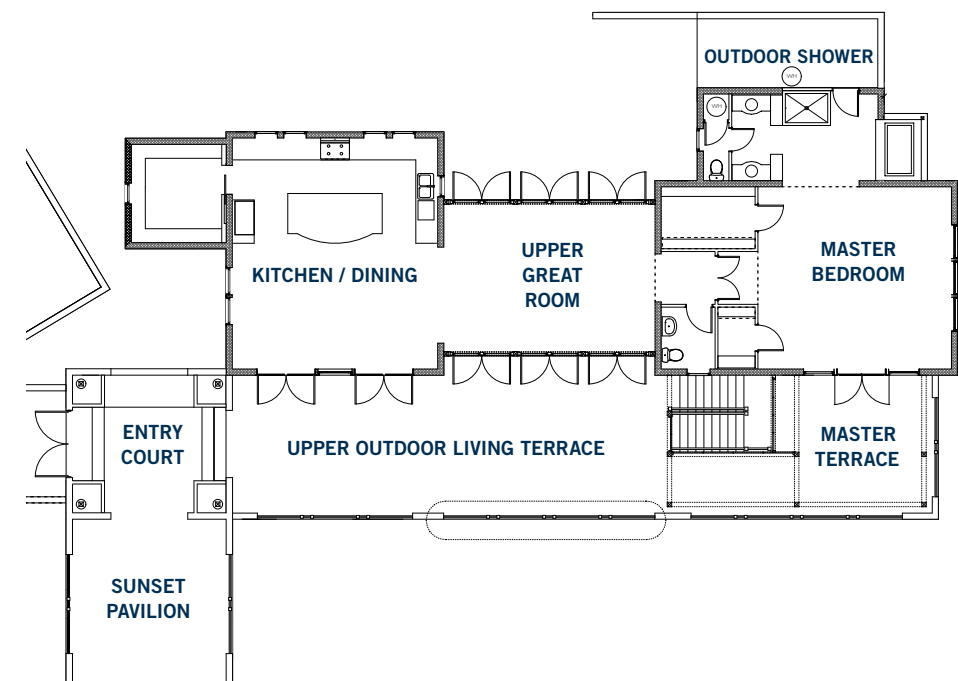
THE DESIGN

A focus on family and ease in entertaining formed the blueprints for 129 Morning Rise Lane. The impressive outdoor living spaces and the generous second floor great room provide a backdrop for inspired social gatherings and family fun. Terrace access from each of the four bedrooms allows for intimate outdoor moments and soaring ceilings mimic the scale and grandeur of the mountain peaks standing sentry on the horizon.

3,948 SQUARE FEET
4 ENSUITE BEDROOMS
1 POWDER ROOM
FULLY FURNISHED



LEVEL 1



LEVEL 2

DISTINCTIVE ELEMENTS:

- » Entry court with covered trellis, garden, and sunset pavilion
- » Natural travertine limestone flooring throughout
- » Standing seam architectural roof
- » Expansive upper level master suite with private courtyard
- » Three guest suites, each with private entry and direct access to the poolside terrace
- » Pool and expansive poolside terrace
- » Outdoor living space with wet bar and kitchen
- » Spacious kitchen and dining room with maple cabinetry and granite countertops
- » Distinctive upper great room with soaring ceilings and floor-to-ceiling transoms and French doors
- » Qualifies for Citizenship by Investment program and Christophe Harbour Club membership

SANDY BANK BAY

With picture-perfect placement along a sparkling bay and an expansive stretch of sugar-sand beach, Sandy Bank Bay is the premiere residential offering at Christophe Harbour. The Pavilion beach club, a brief stroll from 129 Morning Rise Lane, is the social centerpiece of the community. Home to al fresco dining, oceanfront pool, and beachside cabana bar, The Pavilion celebrates relaxed refinement and exceptional service. Just off the shores of Sandy Bank Bay, reefs ensure prime snorkeling while trailheads for hiking and biking ribbon the landscape. Taking shape just a short drive away are the Tom Fazio golf course atop Priddies Plateau and a superyacht marina and village.

To inquire for more information or to schedule a private showing of the residence at 129 Morning Rise Lane, please contact your Christophe Harbour Real Estate Sales Executive at 869.466.8738 or info@christopheharbour.com.





CHRISTOPHE HARBOUR
ST. KITTS

Call, email, or log on and start your journey today.
800.881.7180 or 869.466.8738 | info@ChristopheHarbour.com | ChristopheHarbour.com

Authorized by the Government of St. Kitts and Nevis as an Approved Project for Citizenship by Investment.

Obtain the Property Report required by Federal law and read it before signing anything. No Federal agency has judged the merits or value, if any, of this property. This is not intended to be a solicitation or offer for purchase in states and/or jurisdictions where registrations is required. Prices, plans, products and availability are subject to change without notice. Illustrations are artist's renderings only and may differ from completed product. Improvements, facilities, and programs are in formative stages and subject to change without notice and cannot be guaranteed at this time. Nothing in these materials obligates the developer or any other entity to build any facilities, improvements, features or amenities depicted by artist's renderings or otherwise described herein, and there is no guarantee that any illustrated or described proposed future development will be implemented. Use of recreational facilities and amenities may be subject to separate club membership requirements, payment of fees and/or other restrictions. Ownership may include the opportunity to place your unit in a rental arrangement. An Affiliate of Klawah Partners.